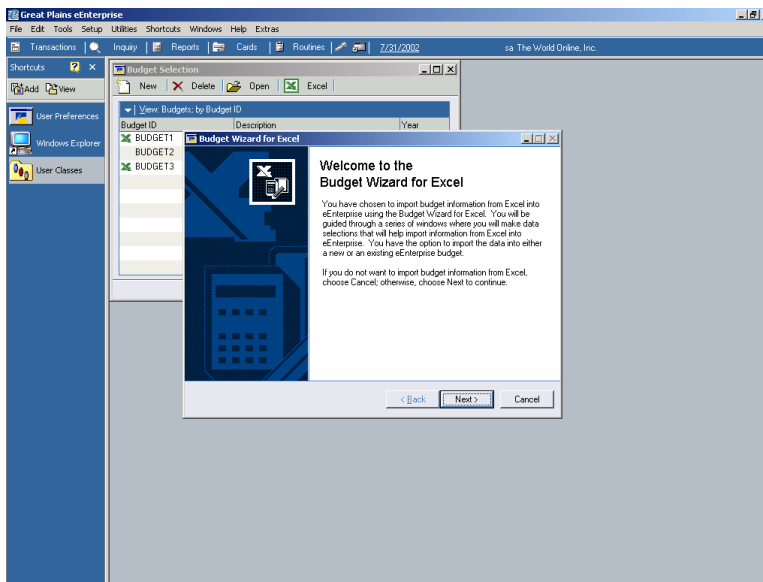


EXCEL-BASED BUDGETING

Microsoft Excel is the world's most popular tool for complex, graphical budgeting, and we have automated the process of sharing budgeting information between eEnterprise and Excel. Capitalize on the budgeting templates, spreadsheets, and graphical features in Excel, then combine that information with your financial reports in eEnterprise for a complete financial picture of where your organization has been, where it's at today, and where it is going in the future. Budget modifications made in Excel automatically update eEnterprise budget fields, ensuring the latest, most accurate information is available to everyone who needs it throughout the organization.



A wizard quickly walks users through the initial integration between Excel-based budgets and eEnterprise. After that one-time setup, information is automatically exchanged with one click of a button.

FINANCIAL REPORTING

High-powered financial reporting is a must, and eEnterprise delivers the flexibility, rapid report design and advanced features you need with multiple reporting and business intelligence tools that include eView, FRx, Knosys and Enterprise Reporting.

eView

eEnterprise eView delivers Web-based business intelligence, making it easy for decision makers throughout your organization to get the answers they need using a standard Web browser interface. By tapping the powerful information contained in your eEnterprise tables, eView delivers the accurate, up-to-date information that will help managers and executives make smarter, faster decisions. With over 50 preset views that provide insightful detail about your customers, vendors, sales, purchases, products, and employees, as well as the ability to custom design additional views, eView turns enterprise-wide access to information into one of your most powerful competitive weapons.

| Customer ID | Customer Name | Contact Person | Address 1 | Address 2 | City | State | Zip | Phone 1 | Salesperson ID |
|--------------|--------------------------------|---------------------|----------------------------|-------------------|--------------|-------|------------|-------------------------|----------------|
| AARONFIT0001 | Aaron Fitz Electrical | Bob Fitz | 11403 13th Avenue South | | Chicago | IL | 60603-0776 | (312)434-3471 Est. 0000 | SEAN W. |
| ADAMPARK0001 | Adam Park Resort | Roberta Masouras | Suite 63 | 14 Chestnut Drive | Indianapolis | IN | 46206-1391 | (317)778-4389 Est. 0000 | CHARLES E. |
| ADVANCE0001 | Advanced Paper Co. | Manoj Monat | 944 19th Street S. | | Chicago | IL | 60603-9111 | (312)434-2099 Est. 0000 | SEAN W. |
| ADVANCE0002 | Advanced Tech Satellite System | Grant Lasko | 9734 66 Ave. | | Toronto | ON | M8D 7R5 | (416)482-3787 Est. 0000 | GARY W. |
| ALTONMAN0001 | Alton Manufacturing | Jennifer Rozzini | P.O. Box 3343 | | Detroit | MI | 48233-3343 | (313)532-8989 Est. 0000 | CHARLES E. |
| AMERICAN0001 | American Science Museum | Andrew MacWilliams | 701 North Carlton Place | | St. Louis | MO | 63115 | (314)387-0101 Est. 0000 | SEAN W. |
| AMERICAN0002 | American Electrical Contractor | Sue Almassy-Wickler | 3414 North Cabernet Avenue | | Iowa City | IA | 52240-1827 | (319)339-0038 Est. 0000 | DARLENE B. |
| ASSOCIA70001 | Associated Insurance Company | Dmitry Rodin | 309 Garden Mall | | Lincoln | NE | 68302-3800 | (402)754-2276 Est. 0000 | DARLENE B. |
| ASTORSU0001 | Astor Sales | Business Office | 994 West Alaska Ave. | | Gary | IN | 46401-5444 | (219)778-9067 Est. 0000 | CHARLES E. |

eView extends eEnterprise business information to key executives and other managers throughout the organization via the Web, providing them the strategic, decision-making information they need, without requiring them to access the financial system.

FRx

Multiple company consolidations, multiple currency translations and the unique ability to drill down from Web-based financial statements back into the eEnterprise General Ledger inquiry system make the combination of eEnterprise and FRx strategically important to your organization.

FRx uses a spreadsheet-like interface to deliver the ultimate in report design flexibility. Powerful row, column and reporting tree "building blocks" make it easy to construct new reports and shed new light on your financial picture. And, because FRx seamlessly integrates with eEnterprise, changes to the chart of accounts are instantly reflected in the financial statements, reducing costly errors and expensive maintenance.

Once the report is created, it can be printed, viewed on-screen, e-mailed, exported to a spreadsheet, or dynamically updated in a spreadsheet. And FRx for eEnterprise offers the exclusive drill-down functionality that allows users to drill down into the eEnterprise inquiry system from FRx network and Web-based reports, instantly reviewing the underlying detail for complete, accurate answers fully supported by the data.

FRx enables you to create comprehensive, meaningful and highly customizable financial management reports. It's also easy to use-anyone, from the CEO to the marketing analysts (with appropriate security) can use FRx to create their own reports.

To maximize workstation productivity, FRx reports are processed at the server, and can be scheduled to ensure the most important reports are ready when needed.

Incredibly powerful and easy to use, FRx sets the standard for excellence in financial reporting.

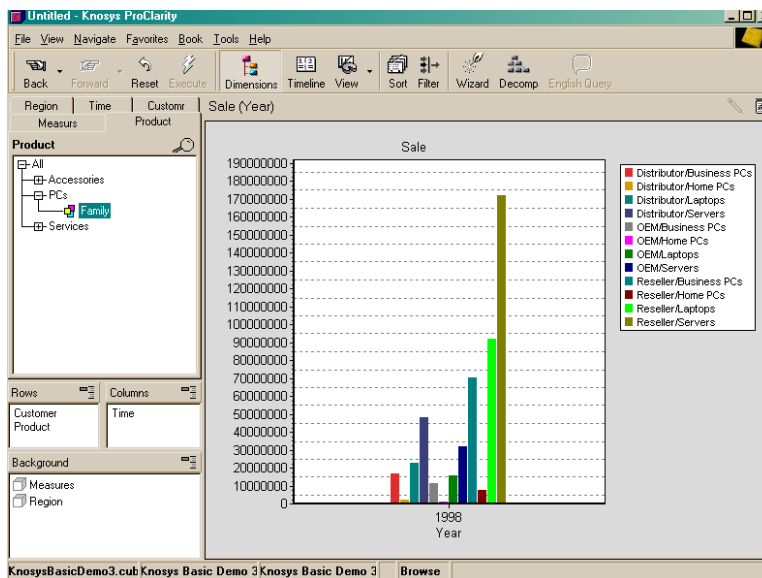
| ASSETS | | LIABILITIES AND SHAREHOLDERS' EQUITY | |
|-------------------------------|------------------|--------------------------------------|------------------|
| Cash - Checking | 890,220 | Accounts Payable | 1,000,400 |
| Cash - Money Market | 129,091 | Accrued Taxes | (971) |
| Total Cash | 719,801 | Accrued Liabilities | |
| Accounts Receivable | 1,715,030 | Suspense Account | (736) |
| Allowance For Bad Debts | (3,871) | Total Current Liabilities | 1,000,200 |
| Int'l Corp Receivable | 141,798 | Leases Payable | |
| Net Accounts Receivable | 1,850,927 | Notes Payable | |
| Total Inventories | 62,814 | Long Term Liabilities | |
| Prepaid Assets | | Total Liabilities | 1,665,296 |
| Current Assets | 2,642,912 | Capital Stock | |
| Leasehold Improvements | 125,895 | Additional Paid-in Capital | |
| Office Furniture And Fixtures | 1,400,884 | Years to Date Income | 225,223 |
| Office Equipment | | Retained Earnings | |
| Less Accumulated Depreciation | (927,507) | Treasury Stock | |
| Net Fixed Assets | 608,272 | Shareholders' Equity | 225,223 |
| Total Assets | 3,251,184 | Liabilities and Equity | 1,890,519 |

Graphical reports generated by FRx allow viewers to "drill-down" from high-level to detailed information in eEnterprise.

Business Intelligence with Knosys

Unlock the secrets of your financial information by taking advantage of ad-hoc query capabilities and exception and key indicator reporting through Knosys. Using Microsoft SQL Server OLAP/Analysis Services, this analytical platform can be used to create custom solutions to meet the specific analysis needs of a wide variety of business decision makers. Individuals can view information in a multidimensional graphical format that allows for effortless exploration of the multiple dimensions your data contains. For example, sales executives can easily review in a single display sales by month, region, business unit, product family, dollar volume and any other dimension you define. Analysis can include multiple dimensions, such as sales for three months by region for each product family.

Knosys enables decision makers to easily explore complex information, helping them visualize trends, patterns and relationships within eEnterprise-allowing them to make better business decisions.



Knosys delivers information in a future-looking, graphical view that is necessary for executive decision-making and strategic planning.

Enterprise Reporting

Providing an efficient system for collecting and reporting information from across the organization, Enterprise Reporting delivers solid control at the center with a high degree of flexibility to mold the reporting processes around your business practices.

Enterprise Reporting is designed for sophisticated group reporting and consolidation needs, featuring advanced multicurrency capabilities and multidimensional consolidations and eliminations.

With Enterprise Reporting, you'll finally have the proper data set you need to see your entire organization-or any part of it-the way it really is. An unlimited number of tree structures off of multiple dimensions allow intuitive graphical manipulation of reporting structures, powerful analysis and reporting via the Web, and flexible "what-if" analysis for potential changes in structure and roll-up reporting.

Recognizing that constant reorganization is a way of doing business, Enterprise Reporting also makes it easy to test and implement unlimited reorganization combinations. This capability also allows you to test the impact of acquisitions and divestitures on your financials to identify the potential benefits of various options.

Enterprise Reporting combines the power and flexibility of a spreadsheet with the organizational benefits of a centrally controlled reporting application. One database/one reporting tool for actuals, forecasts and budgets gives you powerful central control, and forms and replication make it easy to collect information from users throughout the organization.

| Company Code | Company Name | Transaction type | Period | Currency | Date | Time |
|---|--|------------------|--------|----------|------------|----------|
| 313 | BWO Aberdeen | Actual | 0012 | GBP | 31.07.2002 | 10:04:25 |
| 0009 0012 | | | | | | |
| 1070 | Goodwill | | | | | |
| 1079 | Amortization - Goodwill | | | | | |
| 1080 | R&D costs | | | | | |
| 1090 | Other intangible assets | | | | | |
| 1089 | Amortization R&D costs | | | | | |
| 1099 | Amortisation - Other intangible assets | | | | | |
| INTFIXASS Intangible fixed assets (legal) | | | | | | |
| 1110 | Buildings | | | | | |
| 1119 | Acc. depreciation - Buildings | | | | | |
| 1120 | Real estate | | | | | |
| 1129 | Acc. depreciation - Real estate | | | | | |
| 1140 | Land | | | | | |
| 1191 | Production units | | | \$5,000 | | 55000 |
| 1198 | Acc. depreciation - Production units | | | -31,350 | | -33000 |
| 1220 | Equipment | | | | | |

New Web-based reporting allows complex consolidations to quickly happen and be available for viewing.