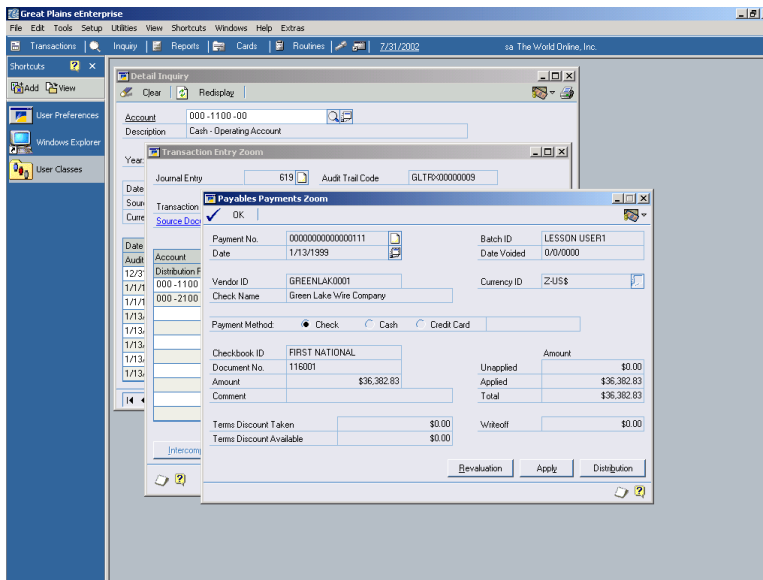


PAYABLES MANAGEMENT

eEnterprise helps you track and analyze extensive vendor information, efficiently process purchases, and make the most of vendor discounts while maximizing cash flow. Streamlined master record and transaction entry, flexible payment entry systems, in-depth analysis reports and detailed vendor inquiries allow payables personnel to turn knowledge into leverage when managing payables activities.

Serving as the link between General Ledger and your purchasing systems, eEnterprise Payables Management offers ease of integration and the ability to track the information most important to your business for billing and analysis purposes.



Payables transaction detail is available in an instant throughout the system with eEnterprise drill downs.

RECEIVABLES MANAGEMENT

Receivables Management is the critical meeting point between your financial system and the reason you're in business-your customer. Detailed customer and sales data provides the information managers need to fine-tune product and service offerings, predictable cash flow helps drive business decisions. Timely cash collection gives you the opportunity to invest in your future sooner. And satisfied customers increase business by purchasing more and by spreading the good news to an ever-widening circle of prospects.

Receivables Management serves as the pipeline between your sales systems and General Ledger, helping you efficiently manage customer statement cycles and cash receipt processes, as well as gather customer and sales data for analysis.